



MEEKER AVE VISIONING

Re-imagining Meeker Avenue

September 14, 2017



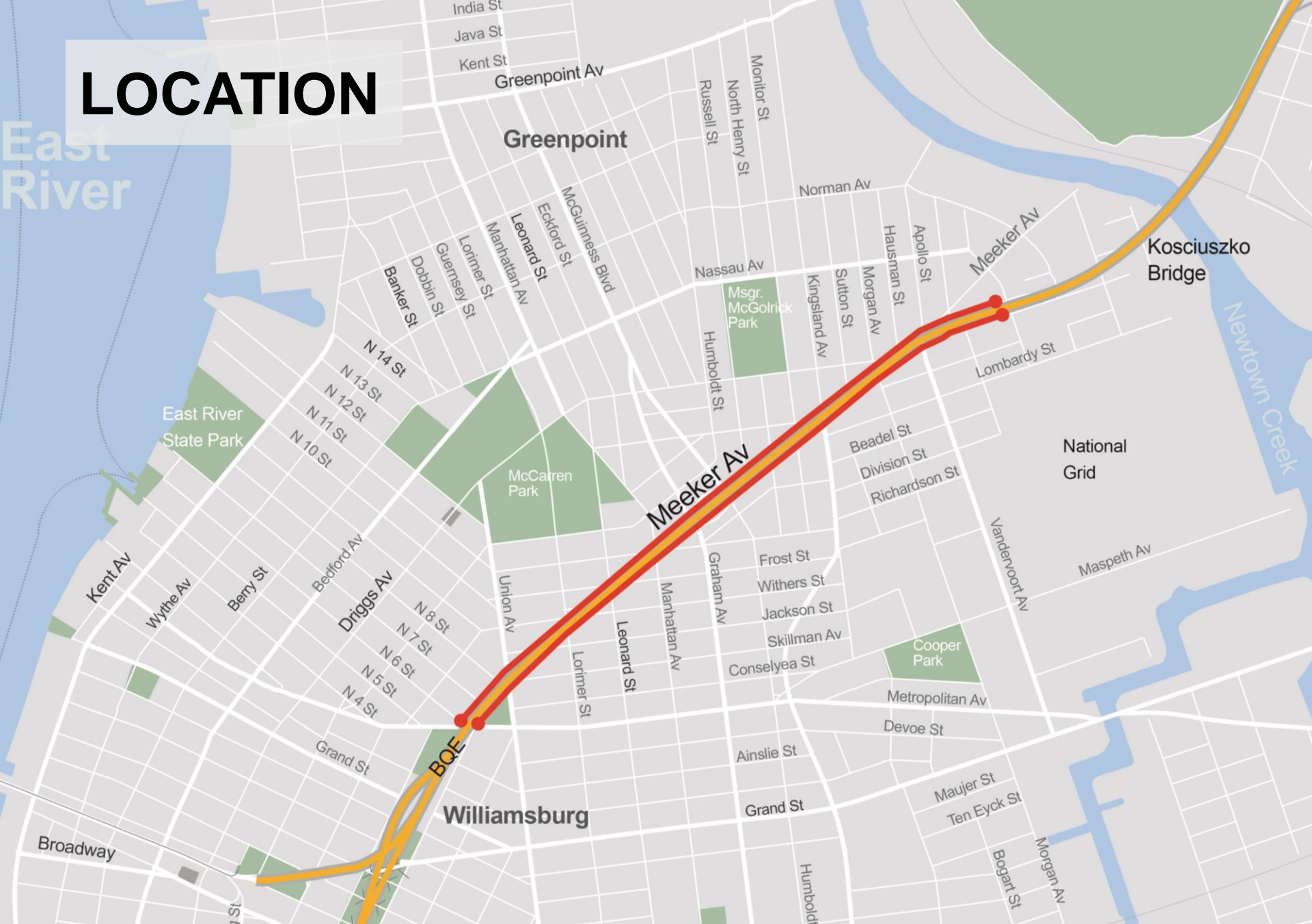
WORKSHOP AGENDA

1. Introduction (20 min.)
2. Break-out session (40 min.)
3. Report back to larger group (15 min.)
4. Next steps and closing (5 min.)

Background

1

LOCATION



WHY WE ARE HERE

Requests from community and elected officials:

Council Member Stephen Levin

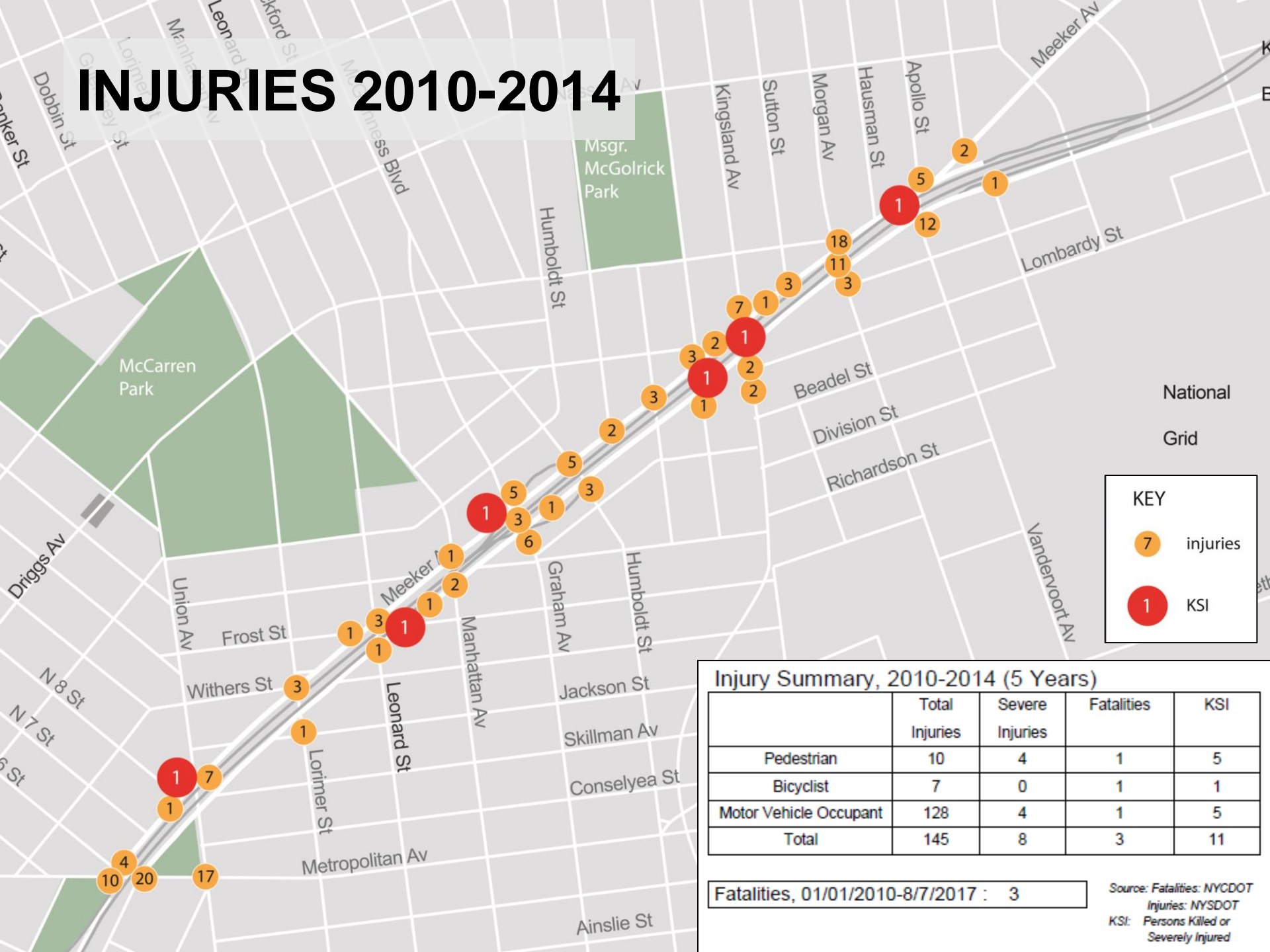
Council Member Antonio Reynoso

Assemblyman Joseph R. Lentol

State Senator Martin Dilan

1. Increase street safety
2. Neighborhood bike connections, including access to the Kosciuszko Bridge path
3. Activate the space under the BQE

INJURIES 2010-2014



National
Grid

KEY

7 injuries

1 KSI

Injury Summary, 2010-2014 (5 Years)

	Total Injuries	Severe Injuries	Fatalities	KSI
Pedestrian	10	4	1	5
Bicyclist	7	0	1	1
Motor Vehicle Occupant	128	4	1	5
Total	145	8	3	11

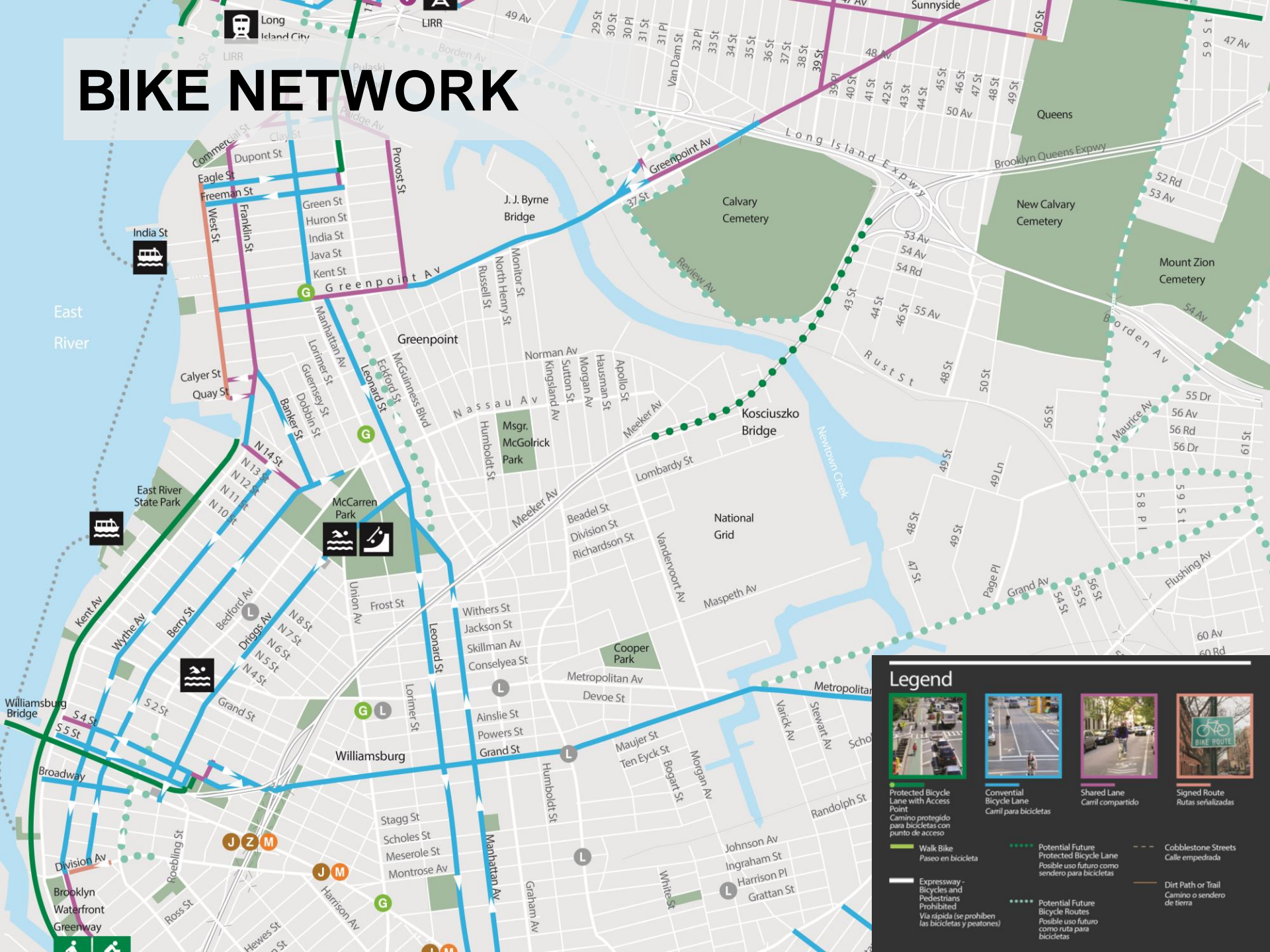
Fatalities, 01/01/2010-8/7/2017 : 3

Source: Fatalities: NYCDOT
Injuries: NYSDOT
KSI: Persons Killed or
Severely Injured

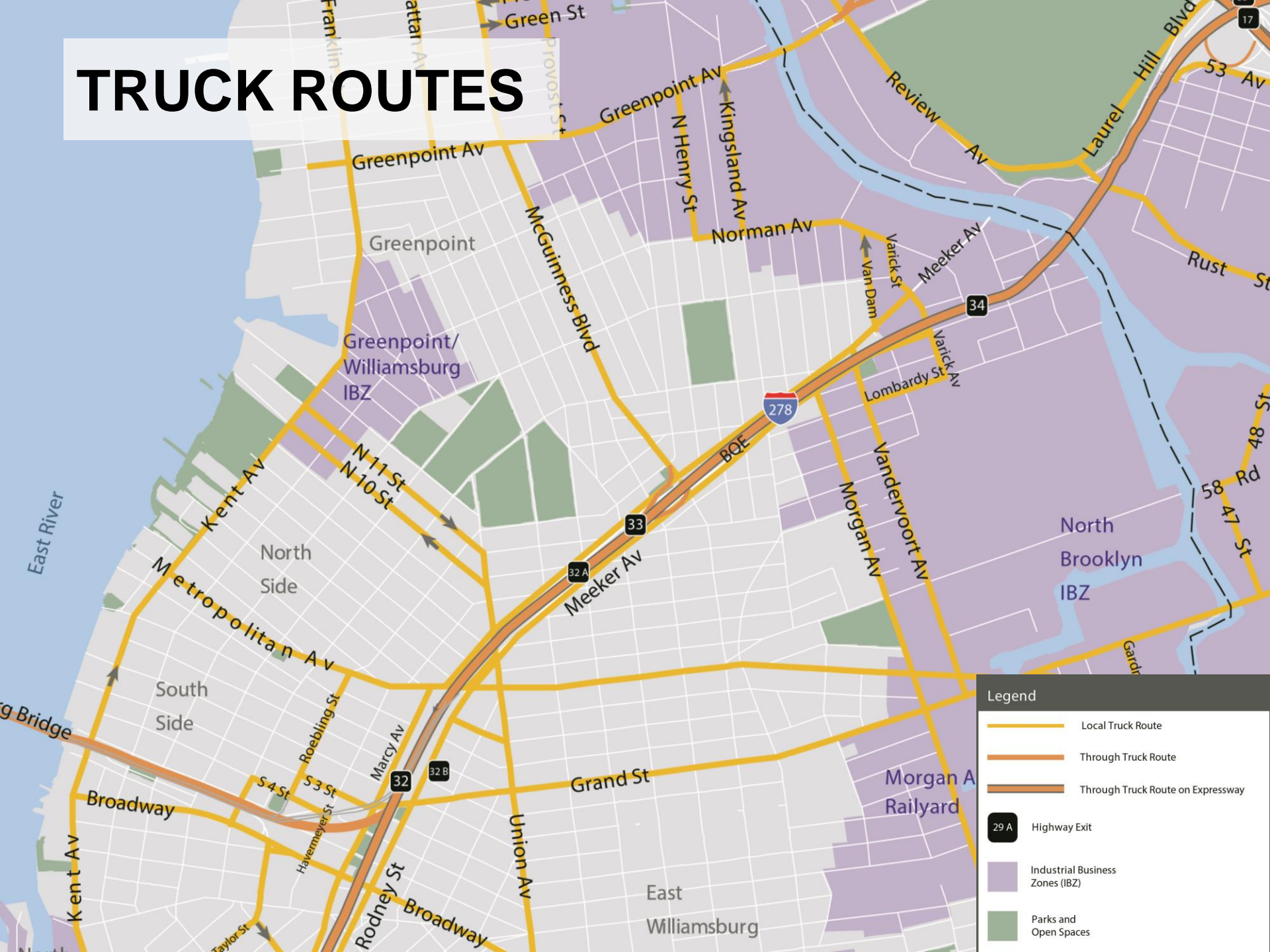
TRANSIT



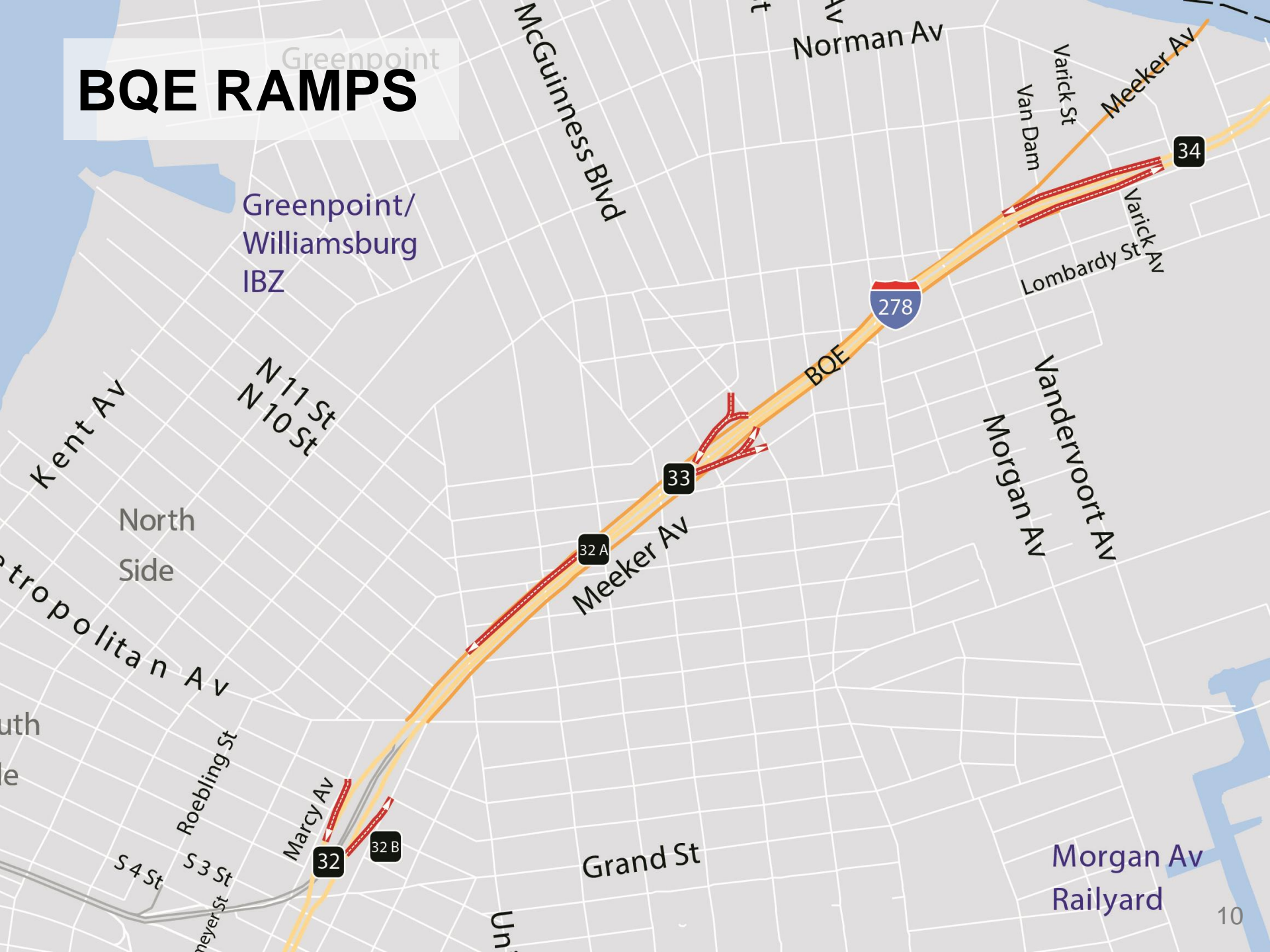
BIKE NETWORK



TRUCK ROUTES



BQE RAMPS



Greenpoint/
Williamsburg
IBZ

N 11 St
N 10 St

North
Side

Metropolitan Av

South
Side

Roebling St
S 4 St
S 3 St
Meyer St

Marcy Av

32

32 B

Grand St

Meeker Av

32 A

33

BQE

278

Lombardy St

Van Dam

Varick St

Meeker Av

34

Morgan Av
Vandervoort Av

Morgan Av
Railyard

Existing Conditions

2



Abandoned Vehicles

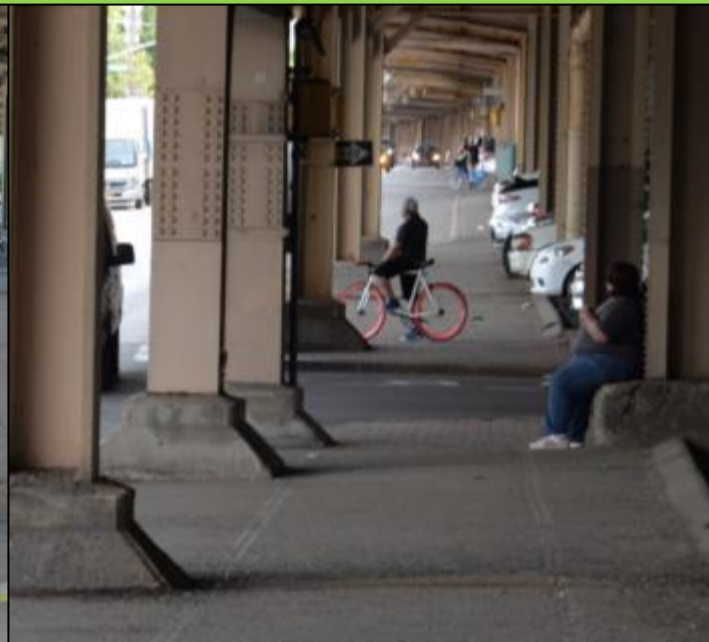
Underutilized Spaces





Biking in Parking Lots

Informal Seating

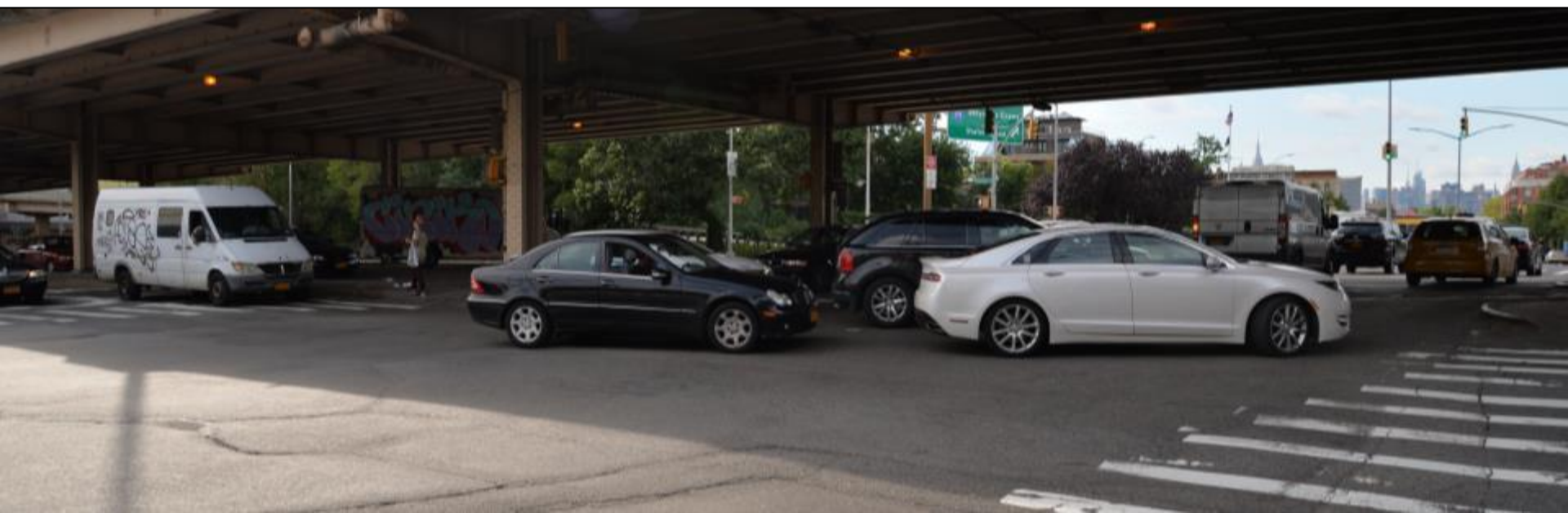


Rollerblading

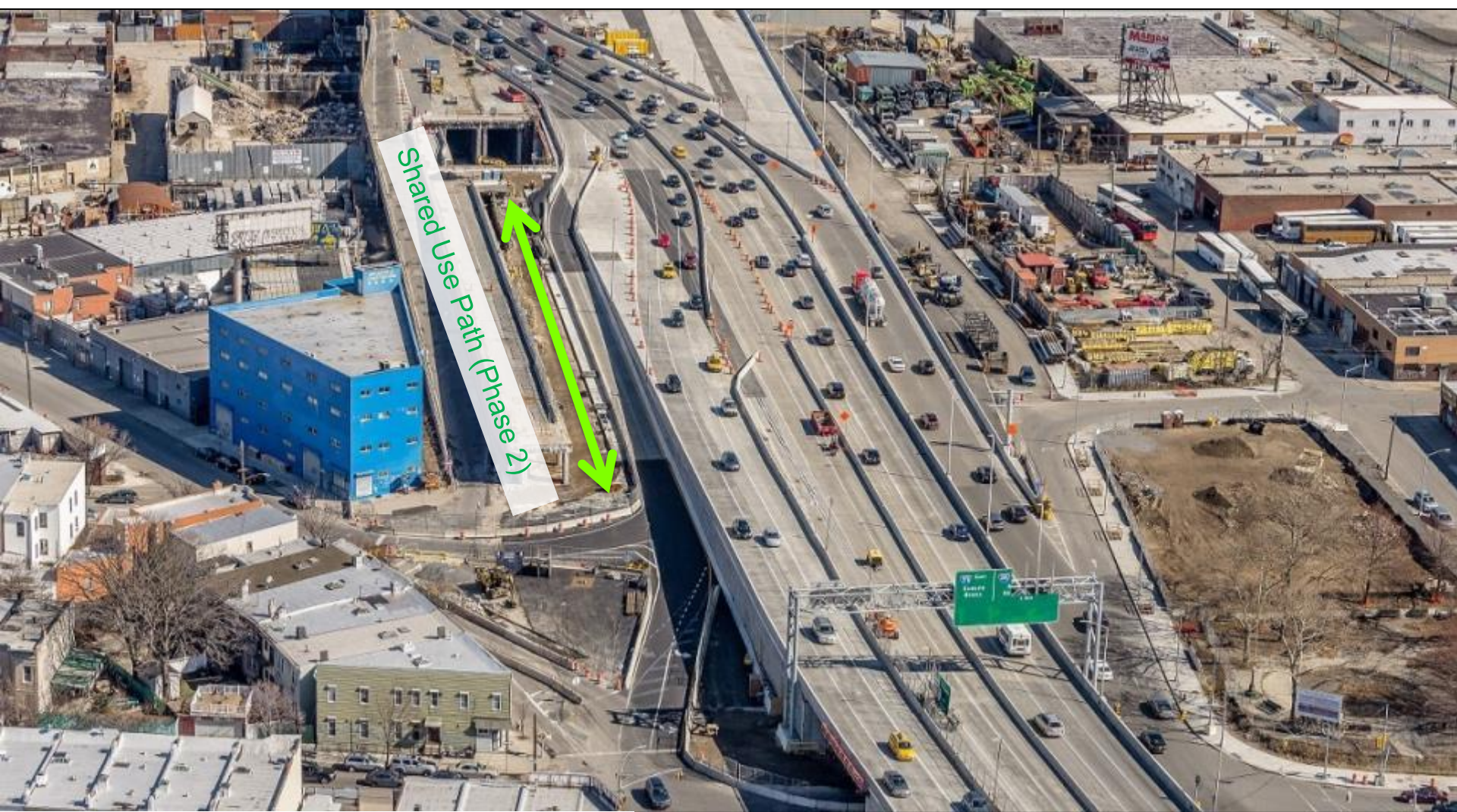




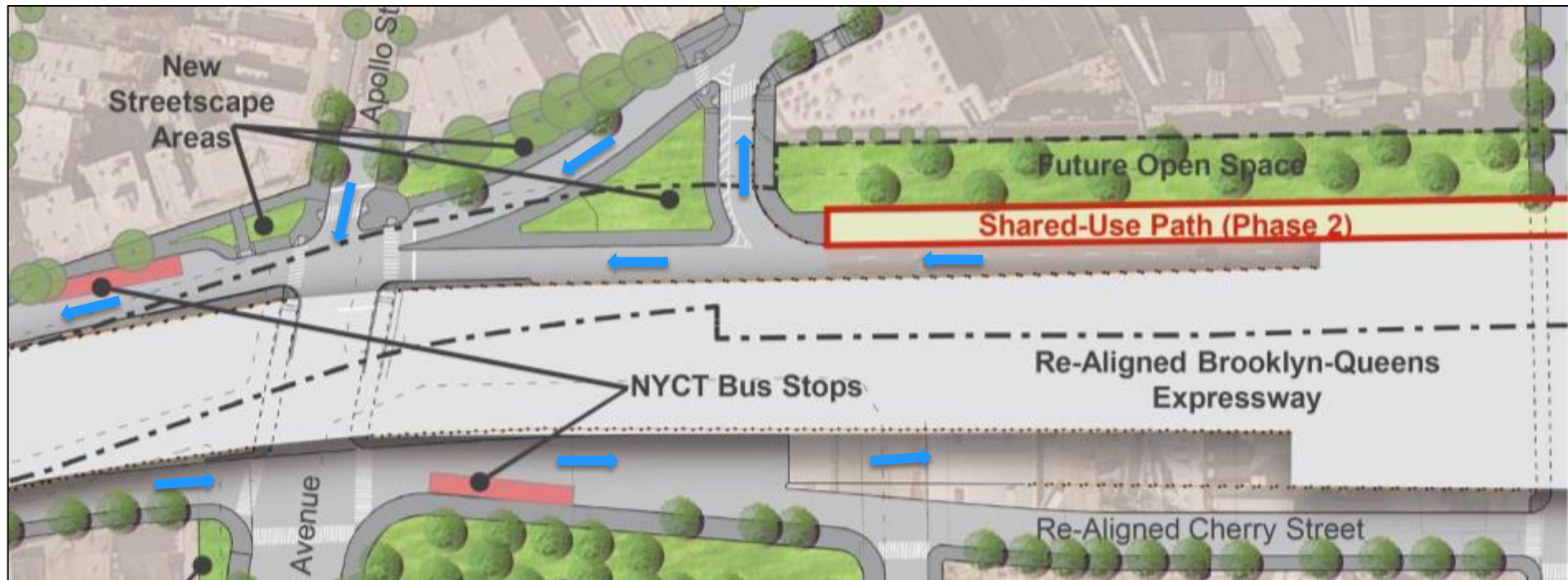
Heavy Turning Movements



KOSCIUSZKO BRIDGE



KOSCIUSZKO BRIDGE



- Street improvements currently under construction
- Phase 2 construction starting 2018
- Tentative completion 2020

MEEKER AVENUE STREET IMPROVEMENT PROJECTS



Before: Meeker Ave from Metropolitan Ave



After: Meeker Ave from Metropolitan Ave

What we have heard

Street Ambassadors Outreach

3

OUTREACH STATIONS



August 20th & 21st at **Jaime Campiz Playground**



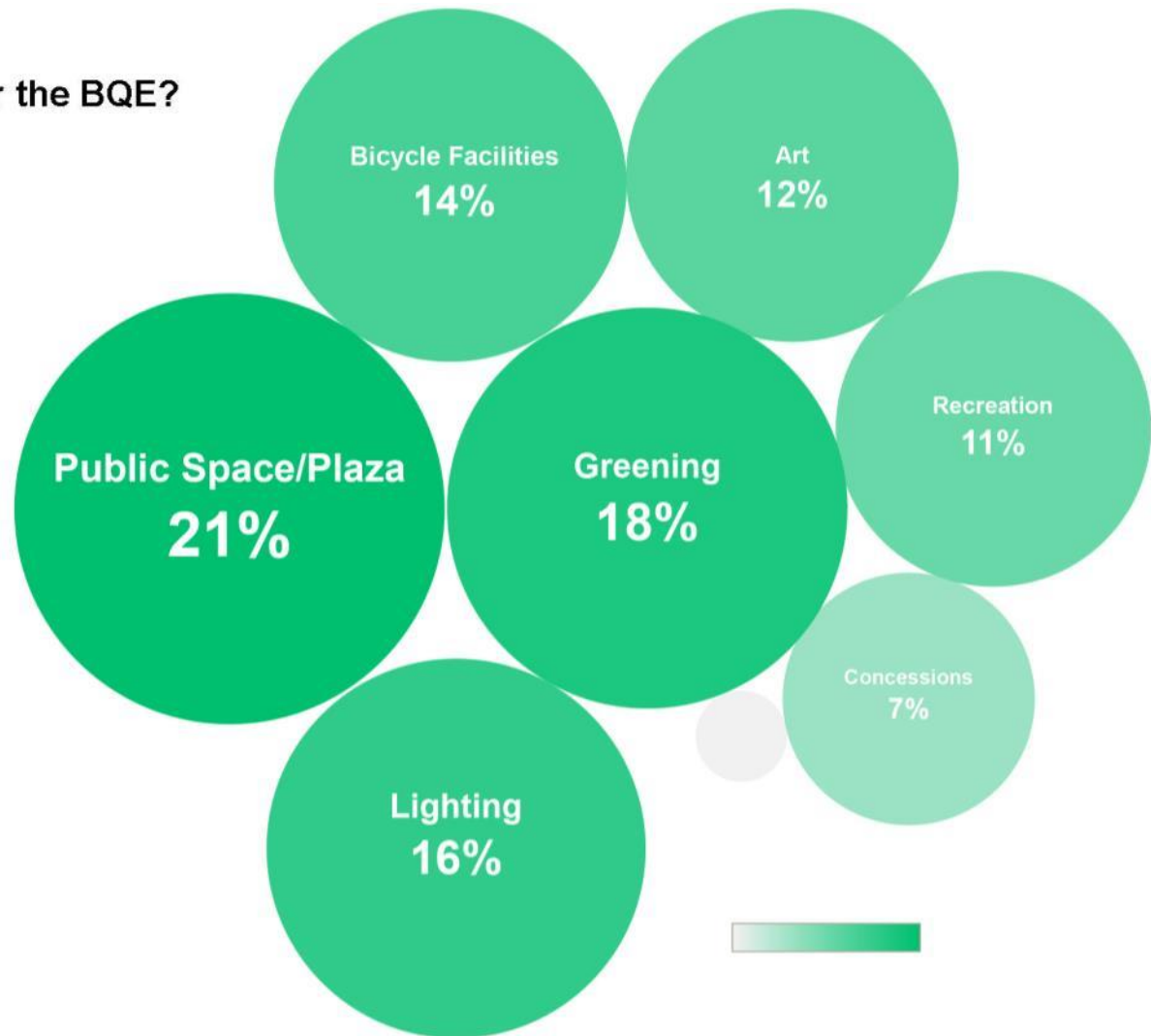
August 25th at **Meeker and Graham**



August 21st at **Macri Triangle (Union and Meeker)**

PEDESTRIAN SURVEY RESULTS

What Would You Like to See Under the BQE?



Meeker Avenue Re-imagined

4



For Discussion:

- Pedestrian safety
- Traffic improvements
- Bike connections
- Public spaces
- Streetscape enhancements
- Maintenance and programming partners

TOOLKIT: PEDESTRIAN SAFETY + TRAFFIC IMPROVEMENTS



Painted Curb Extension



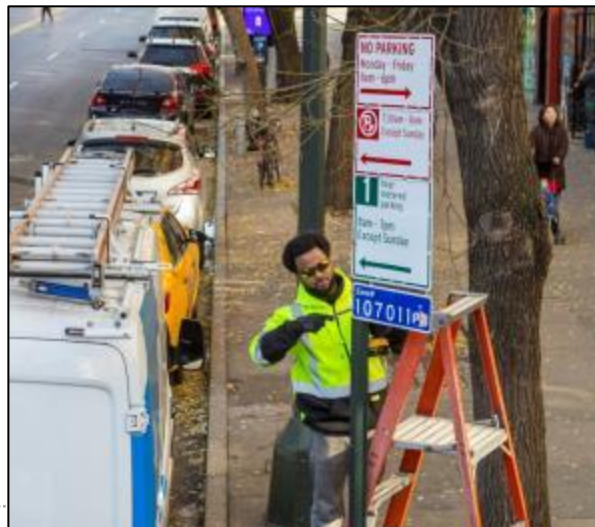
Granite Blocks



Curb Extension



Traffic Signals



Traffic + Parking Regulations



Lane Configuration

TOOLKIT: BIKE CONNECTIONS

Curbside Protected Lane



Signed Route



Under Elevated Structure
Protected Lane



Shared Lane



Conventional Lane

TOOLKIT: PUBLIC SPACES + STREETScape ENHANCEMENTS



Planters



City Bench



Lighting



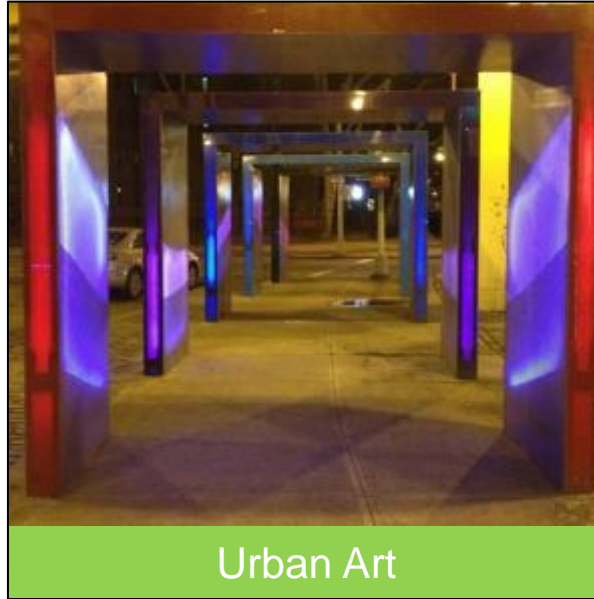
Movable Furniture



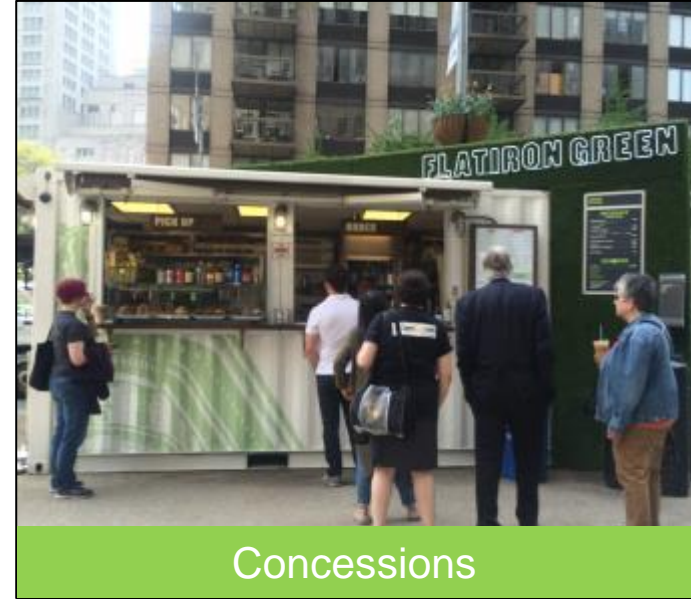
TOOLKIT: MAINTENANCE AND PROGRAMMING PARTNERS



City EI



Urban Art



Concessions



Street Art



Programming

Examples Under Elevated Structures

4



South Street, Manhattan

East River Esplanade, Manhattan





125th Street Plaza, Manhattan





Bliss Plaza in Sunnyside, Queens





Myrtle Wyckoff Plaza, Queens

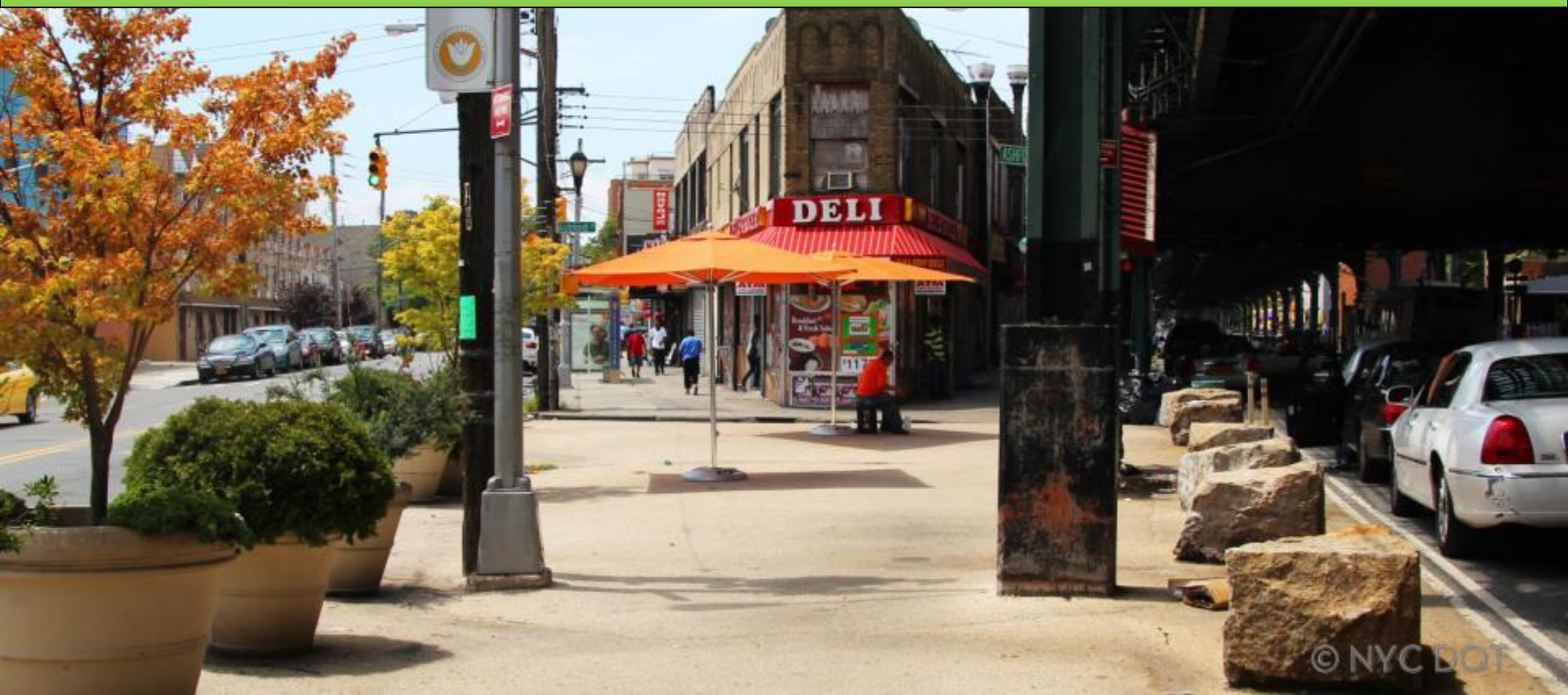




Freeman Street Station, Bronx



New Lots Plaza, Brooklyn





Silent Lights Project
Temporarily installed
under the BQE at
Navy Street and Park
Avenue, Brooklyn

Break-out Sessions (40 minutes)
followed by reports to whole group

5

Next Steps and Closing

6

THANK YOU!



NYC DOT



NYC DOT



nyc_dot



NYC DOT